



BioScan
See life in real-time

NOW RADIOLOGY COMES TO THE ANIMAL



A new generation X-ray imaging system for veterinary diagnosis & interventional radiology

Equine Images



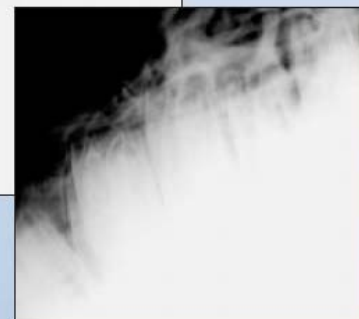
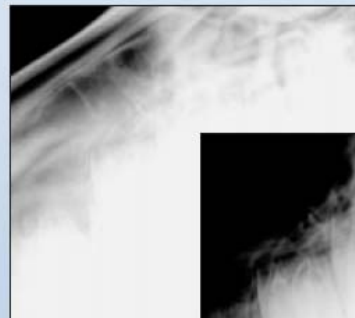
Hoof 56 kV - 7.5 mAs



Hoof + pastern 56 kV - 30 mAs



Fetlock 50 kV - 3 mAs



66 kV - 0.7 mAs

By changing the contrast setting, one can see, in a single X-ray shot, either the sinus or the dentition.



Carpus 64 kV - 7.5 mAs

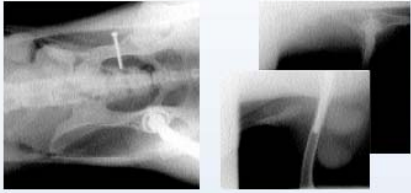


Cervical vertebra 50 kV - 3.9 mAs



Pré-Bouvier 27 • CH-1217 Geneva, Switzerland
Tel. + 41 22 785 17 00 • Fax + 41 22 782 94 18
E-mail: info@bioscan.ch • www.bioscan.ch

Canine Images



Hip prosthesis, 60 kV - 1.6 mAs.



Hip dysplasia flexion view, 60 kV - 5 mAs.



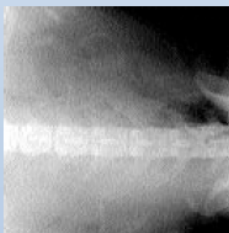
Hip dysplasia extension view, 60 kV - 5 mAs.



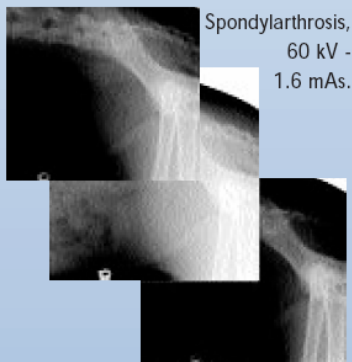
Left hip osteoarthritis, 60 kV - 6 mAs.



Elbow: osteoarthritis after enconaues process operation, 60 kV - 2.5 mAs.



Gestation after 60 days (3 spines + 1 skull of puppies visble), 60 kV - 0.8 mAs.

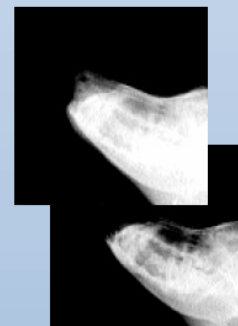


3 levels of interpretation in 1 single X-ray shot: spine, bladder and hip.

Spondylarthrosis, 60 kV - 1.6 mAs.



Stifle joint with laxity, 60 kV - 1.6 mAs



Prognathism ~15 mm, 60 kV - 0.8 mAs.

CHARACTERISTICS AND ADVANTAGES

- Immediate on-site images without transporting the animal to a veterinary clinic.
- Real time X-ray images, visualization on a computer, even if the animal is moving.
- By changing the contrast setting, one can see, in a single X-ray shot, either the soft tissues or the bones.
- Automatic processing, recording and archiving of digital images.
- X-ray dose estimated to be 10 to 100 times lower compared to the conventional film technique.
- Possibility of interventional radiology, radiosopic feature included.
- Better protection of the personnel (veterinarian, technician).
- Simply plug into the mains outlet.
- Easy to use, transportable in a car.
- Designed for large and very small animals.
- No more consumables and development equipment needed.
- Telemedicine: image transfer by E-mail, distance consultation in real time.

INDICATIONS

- Purchase examination
- Bone lesions:
 - osteoarthritis
 - articular chips
 - navicular disease
 - fractures
 - arthrosis of the neck
- Soft tissue lesions:
 - extraction of foreign bodies
 - tendinous lesions
 - abscess puncture, cleaning and draining
- Sinusitis
- Dental problems
- Gestation

COMPOSITION OF ANIMAL-VIEW

- X-ray source easily transportable with its power supply and regulation box.
- Solid state pixel detector with a 20 cm x 20 cm sensitive surface in metal housing.
- Laptop with BioScan's dedicated software for real-time image acquisition and processing.



NOW RADIOLOGY COMES TO THE ANIMAL